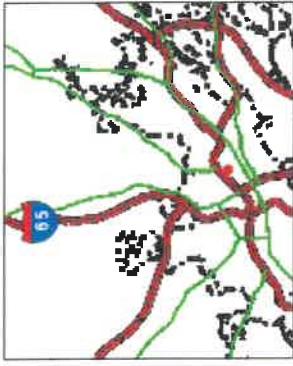


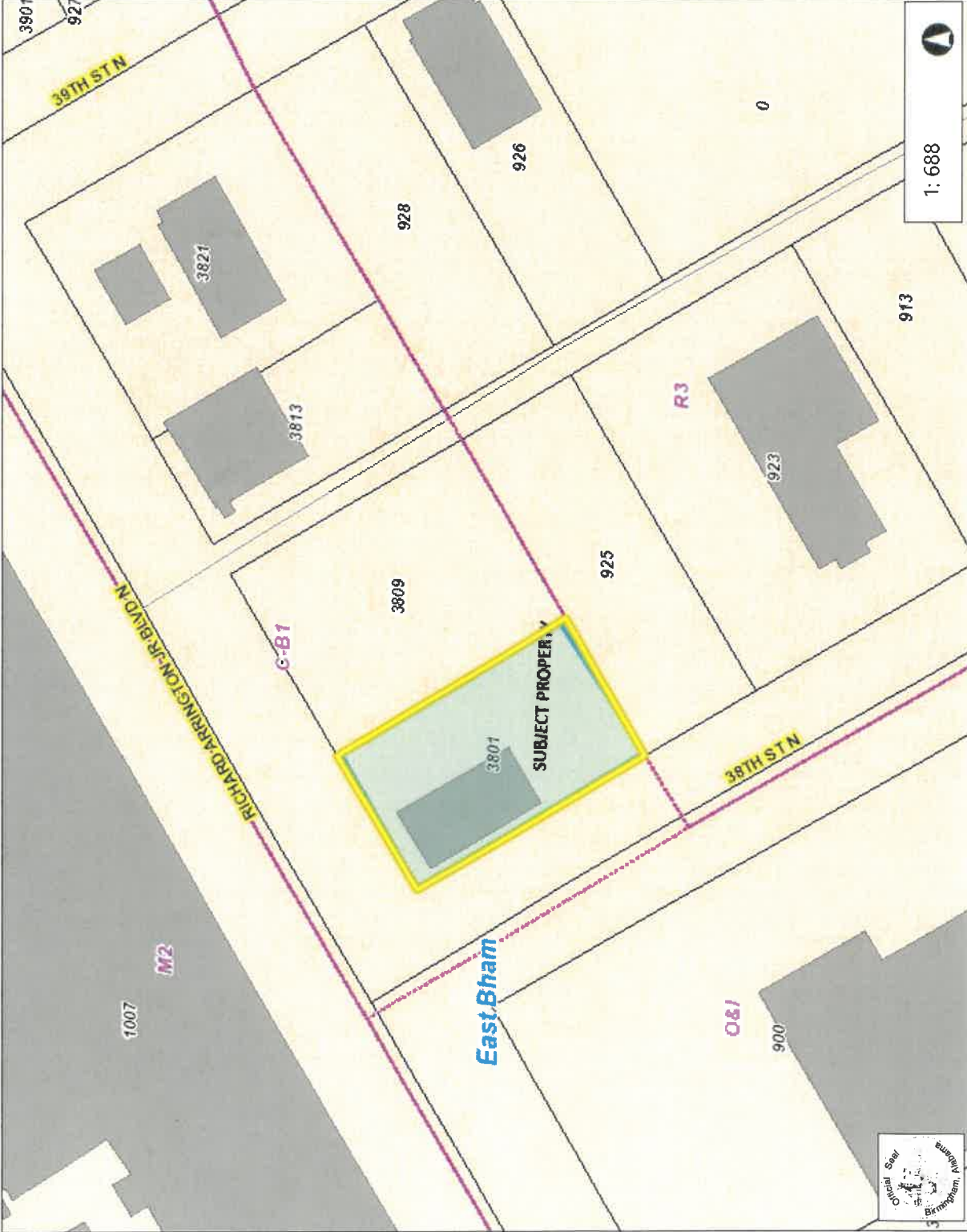
ZAC2020-00025 ZONING MAP



- Legend**
- Centerline Labels
 - Zoning Outline
 - Neighborhoods
 - Railroad
 - Alleys
 - Local Roads
 - Arterials
 - County Highways
 - State Highways
 - US Highways
 - Interstates
 - Limited Access
 - Ramp
 - Buildings
 - Hydrology Lines
 - Hydrology Areas
 - Parcels
 - City Parks
 - Airport
 - City Limits (solid)

Notes

3801 Richard Arrington Jr. Blvd. North



The City of Birmingham makes no warranty, expressed or implied, as to the accuracy of the information represented herein. This map is a user generated static output from an internet mapping site and is for general reference only.
THIS MAP IS NOT TO BE USED FOR NAVIGATION

114.7 0 57.37 114.7 Feet

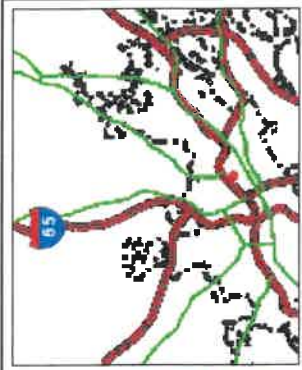
ZAC2020-00025 ADOPTED LAND USE MAP



1: 688



The City of Birmingham makes no warranty, expressed or implied, as to the accuracy of the information represented herein. This map is a user generated static output from an internet mapping site and is for general reference only.
THIS MAP IS NOT TO BE USED FOR NAVIGATION



Legend	
	Centerline Labels
	Neighborhoods
	Railroad
	Alleys
	Local Roads
	Arterials
	County Highways
	State Highways
	US Highways
	Interstates
	Limited Access
	Ramp
	Buildings
	Hydrology Lines
	Hydrology Areas
	Parcels
	City Parks
	Airport
Adopted LandUse Plan	
	Residential-Low
	Residential-Medium
	Residential-High
	Neighborhood Commercial
	General Commercial
	MXU-Low
	MXU-Medium

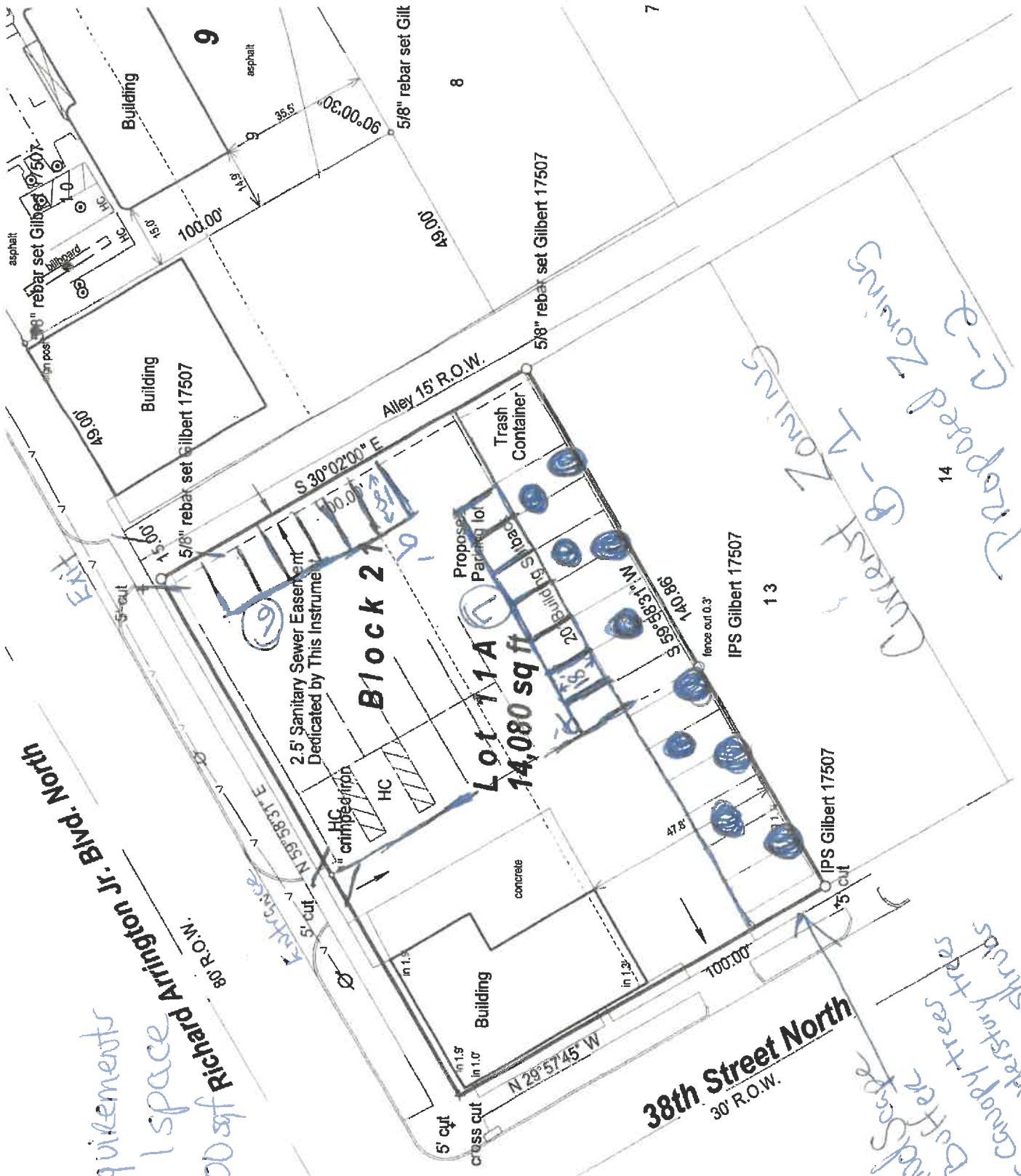
Notes
3801 Richard Arrington Jr. Blvd. North

ZAC2020-00025 Google Maps



3801 Richard Arrington Jr. Blvd. North

Parking Requirements
 Bay lounge 1 space
 for every 100 sq ft
 13 parking
 spaces
 Required



Proposed Zoning
 B-2
 Prepared Zoning
 B-1 Zoning

Land Scope
 Buffer
 8-Canopy trees
 4-understory trees
 32-shrubs

38th Street North
 30' R.O.W.

Block 2
 Lot 11A
 14,080 sq ft

2.5' Sanitary Sewer Easement
 Dedicated by This Instrument

EXIT

ENTRANCE

IPS Gilbert 17507

IPS Gilbert 17507

IPS Gilbert 17507

5/8" rebar set Gilbert 17507

5/8" rebar set Gilbert 17507

Alley 15' R.O.W.

Richard Arrington Jr. Blvd. North
 80' R.O.W.

9

8

13

14

7

Title 1- Zoning Ordinance
Chapter 2: Zoning Districts and Permitted Uses

C-2 General Commercial District

(P) Permitted as of right.

1. Accessory Structure
2. Automobile Parking
3. Automobile Sales
4. Bakery, Retail
5. Bar
6. Bed and Breakfast Inn
7. Business Service
8. Clinic
9. Country Club Golf/ Swim
10. Donation Center
11. Dressmaker/Tailor/Millinery
12. Dwelling Unit, Other
13. Electronics Repair
14. Financial Institution
15. Fitness Center
16. Fitness Center
17. Funeral Home
18. Furniture Store
19. Hospital
20. Hotel
21. Medical Lab
22. Multiple Family(5 or more units)
23. Office
24. Office, Leasing/Sales
25. Park/ Greenway
26. Personal Care Services
27. Personal Instruction
28. Printing and Publishing

- 29.Private Club
- 30.Public Building
- 31.Recreation Equipment Sales/ Services
- 32.Restaurant
- 33.Retail
- 34.School, Business
- 35.Shopping Center
- 36.Studio, Radio/TV
- 37.Upholstery Shop
- 38.Urban Farm, Indoor

(PC) Permitted with conditions as described in Chapter 4, Article II.

- 1. Adult Care Center
- 2. Adult Establishment
- 3. Amphitheater
- 4. Amusement, Outdoor
- 5. Animal Boarding Facility
- 6. Animal Day Care
- 7. Appliance Repair
- 8. Arena
- 9. Automobile Service
- 10.Automobile/Light Truck Repair
- 11.Brew Pub
- 12.Bus Station
- 13.Car Wash, Automated
- 14.Car Wash, Manual
- 15.Child Care Center
- 16.College or University
- 17.Community Garden
- 18.Convenience Store
- 19.Convention Center
- 20.Drive Range Free-Standing
- 21.Family Day/Night Care Home
- 22.Family Group Day/Night Care Home

23. Home Improvement Center
24. Institutional Office
25. Manufacturing, Specialized
26. Market, Farmer's
27. Market, Public
28. Mini- Storage Warehouse
29. Nursey
30. Off-Premise Sign
31. Payday Loan
32. Place of Worship
33. Recycling Collection Center
34. School, Elementary/Middle
35. School, High School
36. Solar Panel, Building Mounted
37. Solar Panel, Ground Mounted
38. Stadium
39. Title Loan/ Pawnshop
40. Veterinarian Clinic
41. Warehouse/Office

**(SE) Permitted by special exception with conditions as described in Chapter 4
Article III.**

1. Chicken Coop
2. Communal Living Facility
3. Duplex/Triplex/Quadplex
4. Event Center
5. Opioid Replacement Therapy Treatment Facility
6. Reservoir/water Tank
7. School, Trade
8. Scientific Lab
9. Urban Farm, Outdoor
10. Utility Substation
11. Water/Sewer Pumping Station

**(PAC) Permitted as accessory to another principal use as described in Chapter 4
Article IV**

1. Accessory Child Care Center
2. Apiary
3. Donation Box
4. Drive-In/Drive-Through
5. Dwelling, Accessory
6. Dwelling, Caretaker
7. Garage Sale/ Yard Sale
8. Home Occupations
9. Internment, Columbarium
10. Internment, Mausoleum
11. Rummage Sale

(AR) Administrative Review

1. Broadcast Satellite
2. Cellular, Microwave or Two-Way Antennas
3. Cellular, Microwave or Two-Way Towers